

Ardour



Enya

TABLETOP FIREPIT

SAFETY INSTRUCTIONS

Dear Customer,

Thank you for purchasing the Ardour tabletop firepit!

This document is part of the appliance. Please read through the following instructions carefully and completely before using the firepit. Please keep this manual in a safe place in order to have these instructions to hand at any time. The manufacturer accepts no liability for damage caused by improper use of anything other than the intended purpose.

Contents.

- 1. Important Safety Instructions**
- 2. Package Includes**
- 3. Fuel**
- 4. Instructions About Location**
- 5. Usage**
 - a. Assembly Instructions
 - b. Adding Fuel
 - c. Lighting Firepit
 - d. Extinguishing Flame
 - e. Relighting
- 6. Maintenance, Cleaning and Storage**



1. Important safety instructions.

By purchasing this product, you are in receipt of the Ardour Instruction Manual and agree to follow the safety procedures and proper use outlined in the rest of the manual.

This tabletop firepit has been tested to EN 16647 standards. However, failure to comply with these safety instructions and precautionary measures can lead to serious injuries or damage to property.



DANGER OF LIFE! NEVER POUR COMBUSTIBLES INTO A HOT CHAMBER



DANGER OF LIFE! NEVER POUR COMBUSTIBLES INTO THE OPEN FLAME



ATTENTION! ALWAYS KEEP THE FIREPIT DISTANT FROM CHILDREN



WARNING OF HOT SURFACE!



ATTENTION DANGER!



WARNING AGAINST FLAMMABLE SUBSTANCES

1. Important safety instructions.



ATTENTION! INTENDED AND PROPER USE:

This firepit must only be operated as a decorative fireplace on even and solid undergrounds and is only destined for outdoor use or to be used in well-ventilated rooms. If using indoors, please take extra caution.



Before igniting, any flammable or explosive material must be removed from the surroundings, including above the firepit.



ATTENTION!

Never leave children or pets unattended near the hot firepit. When using this product please be careful not to let children and pets get too close to the stove.



When operating the firepit, an increased fire risk is given. Always hold ready a fire extinguisher in case of an accident or mishap. Never extinguish the flame with water as this may lead to a steam explosion and cause severe burns.



ATTENTION! DANGER OF LIFE!

Never add fuel into a still warm, hot or burning device. This will lead to an increased risk of explosion.



Never attempt to relight a hot combustion chamber. If the flame goes out allow enough time for the chamber to cool.



ATTENTION!

The glass panes of this firepit become extremely hot. Never attempt to move the firepit during operation and after use allow enough time for the glass panes to cool before touching.



Do not use any other flammable liquids, spirits or paraffins that those recommended in this manual. Do not mix liquids under any circumstances.



Do not place any objects on the firepit and keep a minimum distance of 60cm from flammable surfaces and walls.



Check before each use if there is any damage found to the firepit or accessories. If found, immediately dispose of them and do not put the firepit into operation.



It is prohibited to use in small or confined spaces.



Always supervise the firepit when in operation – never leave the firepit unattended.





Never overfill the combustion chamber with fuel and regularly check the safety container for overflowing fuel. If found, then empty immediately.



If your Ardour Firepit shows an unnatural, uncontrolled burning behaviour, extinguish the fire immediately with the extinguisher rod provided, a fire blanket or a fire extinguisher.



For a clean burning experience, we recommend using a premium bioethanol fuel of a high percentage concentration of 95.0% - 97.5%. Never use other flammable or toxic fuels such as petrol, denatured alcohol.



Never refill hot or warm combustion chambers with combustible fuel, allow them to cool down first.



Indoor use of the Ardour Firepit is only possible in well-ventilated rooms and must be handled with extra caution. The burning of this firepit will produce Carbon Dioxide and Water, no other fire must be operated in the same room.



The tabletop firepit is intended only for decorative use and is not suitable for heating purposes or continuous operation.



Always light the bioethanol fuel immediately after filling the combustion chamber. Never leave bioethanol residue in the combustion chamber and never ignite at a later time.



The firepit is not suitable for use by persons with reduced physical, sensory or mental capabilities, lack of experience and/or lack of knowledge.



The manufacturer cannot be held liable for any damage caused by improper, careless or improper use of the tabletop firepit.



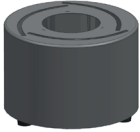
Always observe the applicable national and local health and safety laws in your area.

ADDITIONAL IMPORTANT SAFETY INSTRUCTIONS AND HAZARD WARNINGS

- Never operate the firepit under conditions of strong air draught.
- Wait until the firepit has completely cooled off before transporting.
- Do not modify or change the product in any way and always use all accessories as described.
- It is not recommended that individuals under 18 years of age handle the firepit.
- Only clean the device when it has sufficiently cooled down.
- Do not wear clothing with long and/or loose sleeves when operating the device.
- Keep distant electronic cables from the hot surfaces of the fireplace and from strongly frequented areas.
- During use if you experience dizziness or drowsiness, please stop using, ventilate and seek medical attention.

2. Package includes

Before operating the Ardour tabletop firepit ensure your package includes the following items and that all pieces are free from damage. If any accessories are missing or damaged do not use the firepit and contact your distributor.



**Insulated
Firepit Base**



**Extinguisher
Rod**



**Safety
Container**



**Combustion
Chamber**



**3 x Tempered
Glass (4mm)**

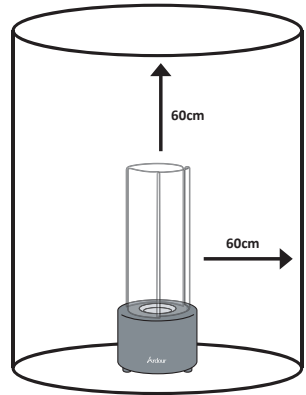
3. Fuel

- We recommend using a premium bioethanol fuel of a high percentage concentration of 95.0% - 97.5% so that it burns as cleanly and odourlessly as possible. Never use other flammable or toxic fuels such as petrol, denatured alcohol.
- Before during and after the burning process, ethanol may evaporate and form an explosive gas mixture. Please ensure that the location in which it is used is well ventilated with a sufficient amount of fresh air during and after the burning process.
- Ensure that any flammable or explosive materials are kept away.
- The manufacturer accepts no liability for the combustibles used in this firepit.
- **WARNING!** Never pour fuel directly into the firepit during combustion or when it is still warm. The fuel can deflagrate and there is an increased risk of explosion.
- Never overfill the combustion chamber. Spilled fuel must be carefully wiped away before lighting the tabletop firepit.
- There is an increased risk of fire when using the tabletop firepit. In the event of an accident or mishap, always have on hand a fire extinguisher or fire blanket.
- Never extinguish an open flame with water, this can lead to a steam explosion and cause severe burns.
- Always store bioethanol fuel in secure, well-sealed room where no open fire exists.
- Bioethanol evaporates from an open storage container and, at temperatures above 21° Celsius together with oxygen in the ambient air - forms a highly flammable, explosive mixture.
- Observe national and regional regulations, rules, laws and other legally binding requirements of your place of residence for the storage and handling of highly flammable liquids.



4. Instructions about location

- Observe the applicable local and national regulations concerning the operation of tabletop bioethanol firepits.
- When operating the Ardour firepit in closed rooms, always make sure that there is sufficient ventilation
- Make sure the surface on which you place the firepit is stable, level and can support the weight of the firepit.
- Only operate the firepit in rooms with a floor area of more than 25 meters square.
- Do not operate this firepit under conditions of strong wind or draught. Only place in an area protected from cross ventilation.
- Keep a minimum distance of 60cm from flammable materials, walls and ceilings.
- Do not operate the firepit under conditions of rain.
- No other fire must be lit in the same room as the firepit.

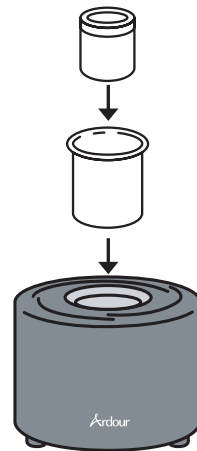


5. Usage

a. ASSEMBLY INSTRUCTIONS

Remove all packaging and inspect the content as to completeness or damages. If any component is missing or damaged, use of the firepit is expressly prohibited, as safe operation cannot be guaranteed. For any replacement parts please contact your distributor and never attempt to use non-original Ardour spare parts. Remove packaging before assembly.

Place the safety container into the insulated firepit base, then insert the combustion chamber into the safety container.



5. Usage

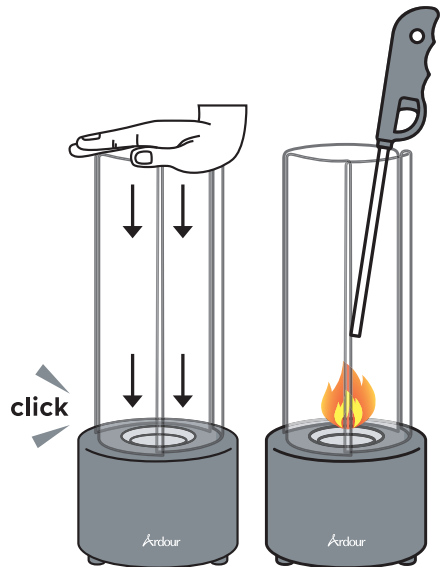
b. ADDING FUEL

- The fuel container must be dry before filling. There must be no water or bioethanol present. If found remove before lighting for safe operation.
- Only fill the combustion chamber when it is cold.
- Never overfill the combustion chamber beyond the marking 'MAX'.
- Never pour bioethanol fuel directly into the fireplace.



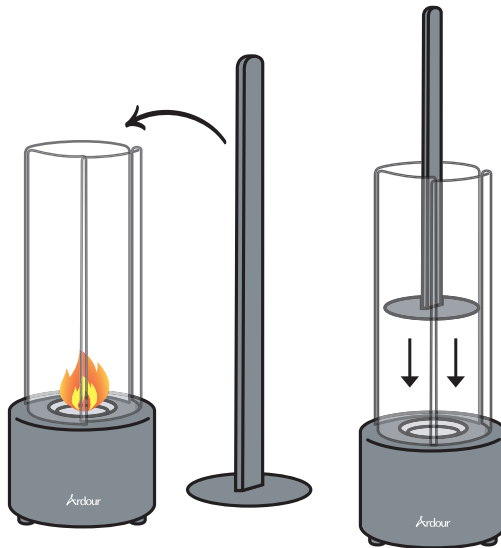
c. LIGHTING FIREPIT

- Insert each of the 3 pieces of glass until they click into place.
- Ensure that all 3 pieces of glass are level.
- When lighting the firepit make sure to observe sufficient safety clearance.
- Only ignite with a long reach lighter to ensure there is a sufficient distance to prevent burn.
- The flame will be small at first and will reach the desired amount in 30 seconds.
- At the beginning of the burn, you might smell a slight odour, which is temporary and will disappear after a few minutes of burning.
- If the flame has not ignited, still use the extinguisher rod provided as some flames may not be visible. Allow the firepit to cool before inspecting.



d. EXTINGUISHING THE FLAME

- Always keep the Extinguisher Rod provided near to the device.
- We recommend letting the combustion chamber burn down completely until it is extinct.
- If it is intended to be interrupted during combustion, use the extinguisher rod to extinguish the flame, by completely closing the opening of the combustion chamber with the round head.
- Once the flame has been isolated from the air the flame will go out.
- **WARNING!** Never extinguish the flame with water this can lead to a steam explosion and cause severe burns.
- **ATTENTION:** in the combustion chamber, small flames – which are not visible for the outside, can blaze for a long time. Even if the fire is completely extinct, the still hot can might inflame re-filled bioethanol fuel.



5. Usage

e. RELIGHTING



When the flames are extinct, let the firepit cool off completely before cleaning.



Never fill fuel into a container that is still hot or warm. The fuel can deflagrate and there is an increased risk of explosion.

If you still want to immediately re-light your tabletop firepit, it is essential to observe the following points:

- Both the glass inserts and the fuel containers become very hot during operation, allow them to sufficiently cool down before handling.
- Always use fireproof gloves when handling (e.g. barbecue gloves) - lift the glass from the housing and lay down on a suitable surface.
- In no case re-fill, a hot or warm combustion chamber. Wait until the combustion chamber has cooled down.
- Now refill the combustion chamber.
- Place the glass inserts back into the housing and ensure they are securely locked in place and that all inserts are at the same height.
- Now light the firing container again using a long reach lighter.



6. Maintenance, cleaning & storage



Let the firepit cool off completely before cleaning.

- The Ardour Firepit is made of high-quality materials. After combustion it is normal for the stainless-steel combustion chamber to show some discoloration from the flames.
- For cleaning we recommend a damp cloth for all parts.
- For the combustion chamber neither strong or abrasive solvents nor scrub pads should be used. These will attack the surface and leave scrape marks.
- A wet cloth with a PH-neutral cleaning agent is sufficient in order to clean the combustion chamber.
- Always keep the firepit well protected and never expose it to harsh weather conditions.
- Remove all soap residues after cleaning



Do not place any objects on the fireplace



Never pour fuel into a hot or still burning fire pit.



Only use in a draught free environment



Operate using only the recommended fuel type



Never leave small children or pets unattended with the fire pit



Keep away from flammable objects



Use outdoors or in a well-ventilated room



Have suitable extinguishing agent ready



Never move the firepit when in use

Ardour

ENYA | TABLETOP FIREPIT

SAFETY INSTRUCTIONS